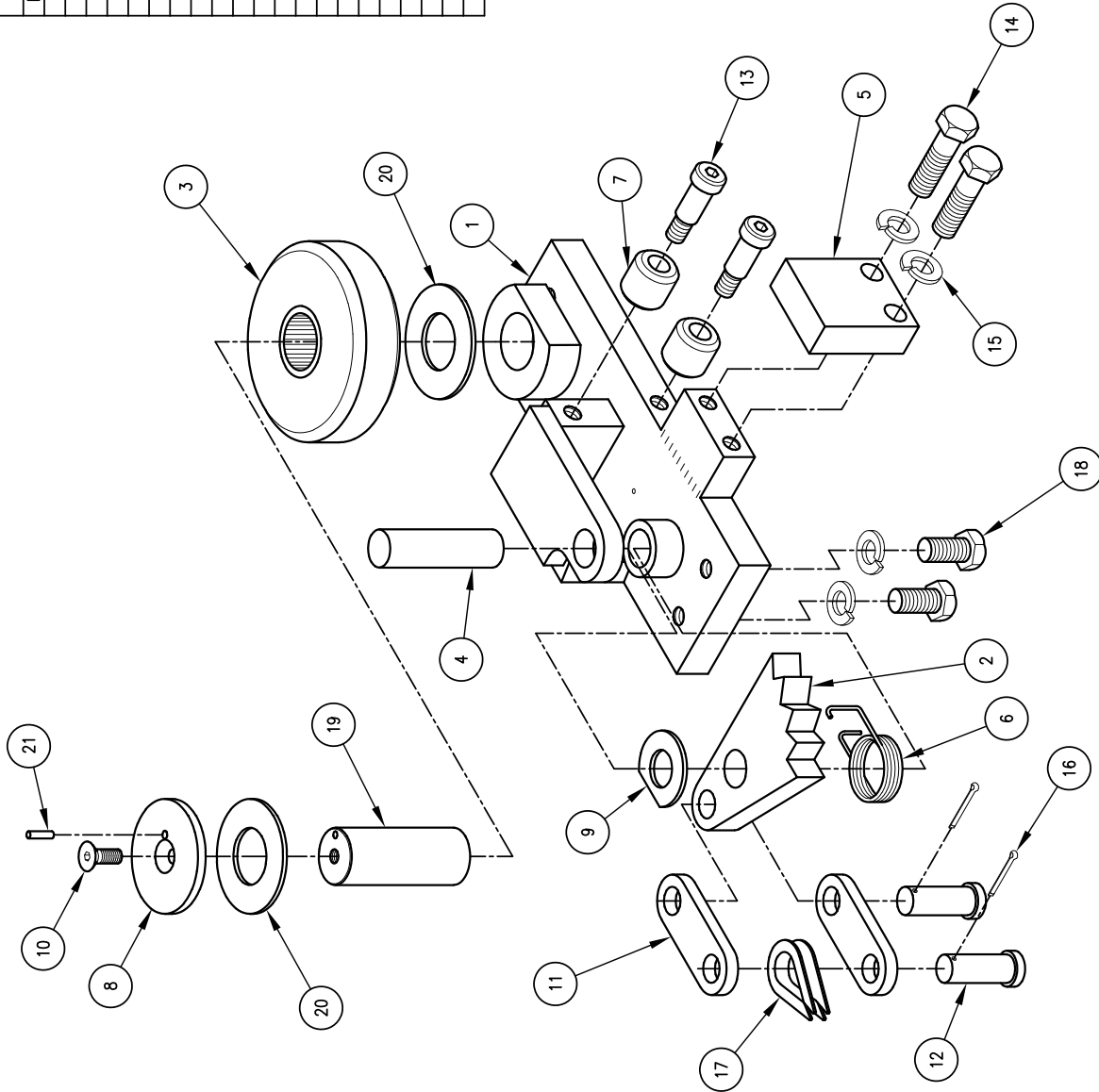


WEIGHT = 32#

BILL OF MATERIALS

ITEM	QTY.	DESCRIPTION	PART No.	SUFFIX
1	1	WHEEL BLOCK WELDMENT (RIGHT HAND)	1245	
2	1	SAFETY CAM	1014	
3	1	5 1/4" PAGG WHEEL ASSEMBLY	2758-5.25	
4	1	CAM PIN	1028	
5	1	GUIDE SHOE	1022	
6	1	CAM SPRING	1029	
7	2	ROLLER GUIDE	1017	
8	1	STEEL WHEEL RETAINER	1244	
9	1	CAM WASHER	1031	
10	1	FHSKS, 3/8-16 x 3/4" LG.	3084	
11	2	LINKAGE PLATE	1032	
12	2	LINK PINS	1033	
13	2	SHOULDER BOLT-SOC. HD. 5/8" x 1 1/4" LG.	2340	
14	2	HCS 5/8-11 x 2 1/4" LG., GR. 8		
15	6	LOCKWASHER - STD 5/8		
16	2	COTTER PIN - 5/32" x 1 1/4" LG.		
17	1	WIRE ROPE THIMBLE 3/8" ROPE - GALV.	1034	
18	4	HCS, 5/8-11 x 1 1/4" LG.		
19	1	STEEL WHEEL SHAFT	1242	
20	2	STEEL WHEEL SPACER WASHER	1243	
21	1	SLOTTED SPRING PIN, 3/16 DIA. x 3/4" LG.	A-HMM1690	STK



UPPER WHEEL BLOCK/SAFETY ASSEMBLY  
PAGG WHEEL

DATE: 8-13-91  
DRN BY: DFK

REV 3  
1072-5.25