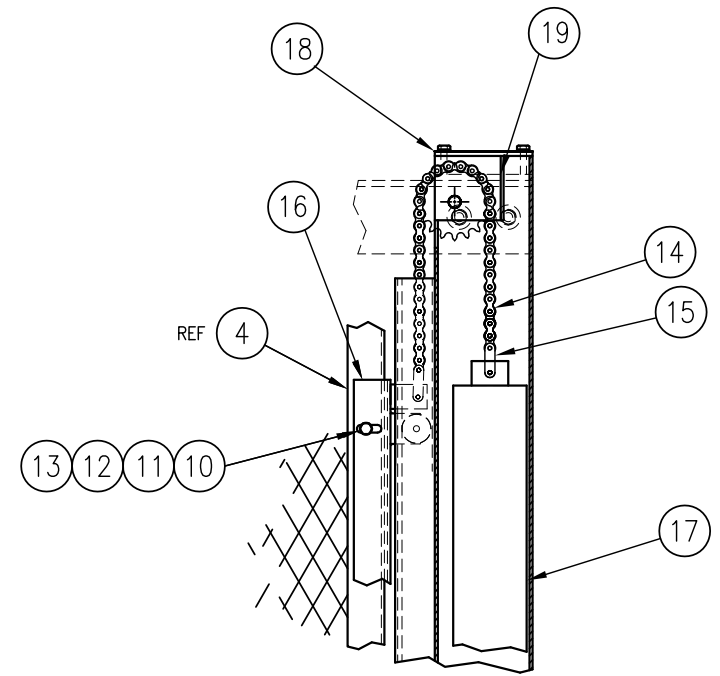
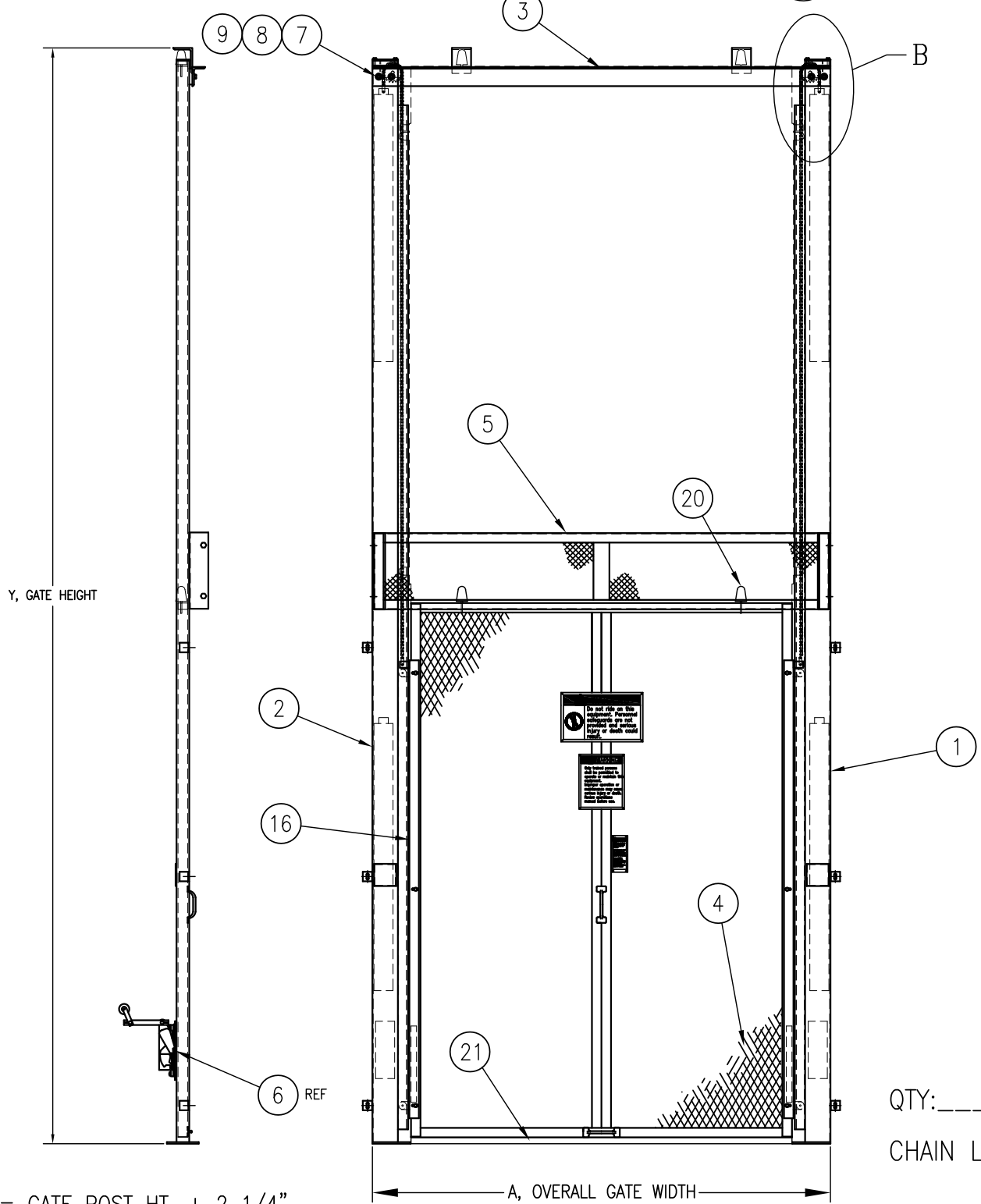


**DETAIL A**  
LEFT HAND INTERLOCK  
ASSEMBLY SHOWN  
SHOWN 4:1

**BILL OF MATERIALS**

ITEM	QTY.	DESCRIPTION	PART No.	SUFFIX
1	1	VERTICAL ACTING GATE POST (R.H.)	2014	WI
2	1	VERTICAL ACTING GATE POST (L.H.)	2011	WI
3	1	VERTICAL GATE CROSSMEMBER	1137	WI
4	1	SINGLE PANEL VERTICAL ACTING GATE PANEL	2016	WI
5	1	STATIONARY PANEL	2015	WI
6	1	L.H. HG-1 INTERLOCK ASSEMBLY FOR V.A. GATE	1287	STK
	1	R.H. HG-1 INTERLOCK ASSEMBLY FOR V.A. GATE	1288	STK
7	4	HHCS, 1/2-13 x 1" LG.		STK
8	4	FLAT WASHER, 1/2"		STK
9	4	LOCK WASHER, 1/2"		STK
10	6	LOCK WASHER, 1/4"		STK
11	6	HHCS, 1/4-20 x 1" LG.		STK
12	6	HEX NUT, 1/4-20		STK
13	6	FLAT WASHER, 1/4"		STK
* 14	2	#40 ROLLER CHAIN		PUR
* 15	4	DOUBLE PITCH #40 MASTER-LINK	2450	STK
* 16	2	TROLLEY ANGLE FOR VERTICAL ACTING GATE	2008	WI
* 17	2	COUNTER WEIGHT FOR VERTICAL ACTING GATE	2407	WI
* 18	8	SCREW, 1/4-20 x 3/4" LG.		STK
* 19	2	SPROCKET BRACKET FOR SINGLE PANEL GATE	2007	STK
** 20	2	BUMPER, BLACK MATTE RUBBER	2452	STK
** 21	1	CLOSED CELL NEOPRENE GASKET	2451	STK
** 22	1	STICKER, "DO NOT TAMPER..."	3716	STK

\* INDICATES PARTS THAT ARE PRE-ASSEMBLED WITH THE GATE POSTS  
\*\* INDICATES PARTS THAT ARE PRE-ASSEMBLED WITH THE GATE PANELS



**DETAIL B**  
SHOWN 3:1

QTY: \_\_\_\_\_ LENGTH: \_\_\_\_\_  
CHAIN LENGTH = LOAD HT. + 18 1/2"

Y = GATE POST HT. + 2 1/4"  
OR  
Y = LOAD HT. + PANEL HT. + RAMP HT. + 4 1/4"



CHAIN DRIVEN SINGLE PANEL  
VERTICAL ACTING GATE ASSEMBLY

DATE: 6-15-00  
DRN BY CRH

JOB NO: \_\_\_\_\_  
TOTAL REQ'D: \_\_\_\_\_

**2405** REV **2**