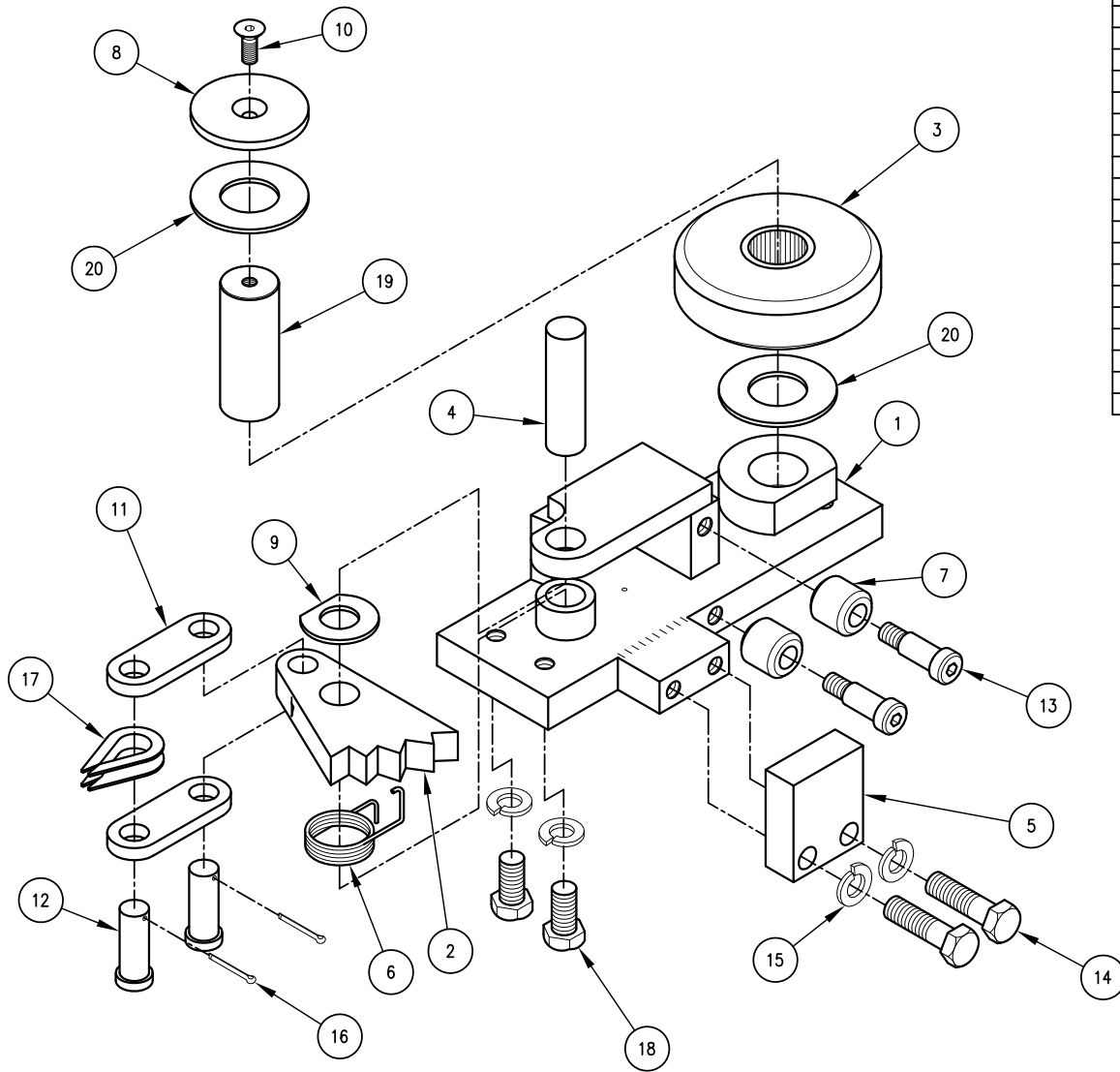


WEIGHT = 38#

BILL OF MATERIALS



ITEM	QTY.	DESCRIPTION	PART No.	SUFFIX
1	1	WHEEL BLOCK WELDMENT (RIGHT HAND)	1245	
2	1	SAFETY CAM	1014	
3	1	5 1/4" PA6G WHEEL ASSEMBLY	2758-5.25	
4	1	CAM PIN	1028	
5	1	GUIDE SHOE	1022	
6	1	CAM SPRING	1029	
7	2	ROLLER GUIDE	1017	
8	1	STEEL WHEEL RETAINER	1244	
9	1	CAM WASHER	1031	
10	1	FHSHCS, 3/8-16 x 3/4" LG.	3084	
11	2	LINKAGE PLATE	1032	
12	2	LINK PINS	1033	
13	2	SHOULDER BOLT-SOC. HD. 5/8"Ø x 1 1/4" LG.	2340	
14	2	HHCS 5/8-11 x 2 1/4" LG., GR. 8		
15	6	LOCKWASHER - STD 5/8		
16	2	COTTER PIN - 5/32" x 1 1/4" LG.		
17	1	WIRE ROPE THIMBLE 3/8"Ø ROPE - GALV.	1034	
18	4	HHCS, 5/8-11 x 1 1/4" LG.		
19	1	STEEL WHEEL SHAFT	1242	
20	2	STEEL WHEEL SPACER WASHER	1243	



UPPER WHEEL BLOCK/SAFETY ASSEMBLY
PA6G WHEEL

DATE: 8-13-91
DRN BY: DFK

1072

REV 2